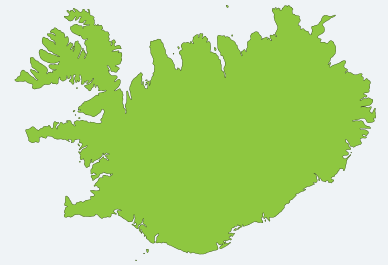


# ICELAND CHALLENGE



## Let's Get Started



Head on over to  
**[www.globetrottinkids.com](http://www.globetrottinkids.com)**  
Click on Iceland.

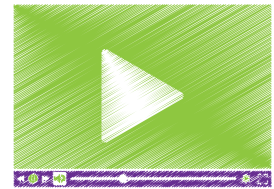
## Where in the World?

Sketch a map of Iceland.  
Label Reykjavík (the capital city), Greenland Sea, and the North Atlantic Ocean.



## Showtime

Watch the informational video about the Iceland, the "land of ice and fire."



## Photo Gallery

Click on the arrows to scroll through the photo gallery.  
Hover over each photo to read its caption.



Pick a photo that you want to learn more about. Research it further.

## YUM! I'm Hungry

click →



Read the descriptions of popular Icelandic dishes. Pick one food that you would LOVE, one you might TRY, and one that's a definite NO for you.

## Sports

click →



What is Iceland's national sport?

Read about the Traditional Sports of Iceland: Glíma and Knattleikr.

## Go Wild

click →

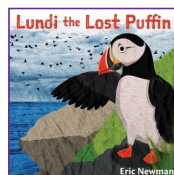


Name a mammal, bird, fish, insect, and spider found in Iceland.

Describe the national animal.

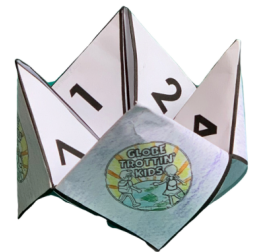
## Story Time

click →



Find out how the children of Iceland rescued Lundi, and thousands of other puffins every year.

## Fact Fun



Make a **Paper Poppin' Fact Finder** to play with friends and family. Click [HERE](#) to print.